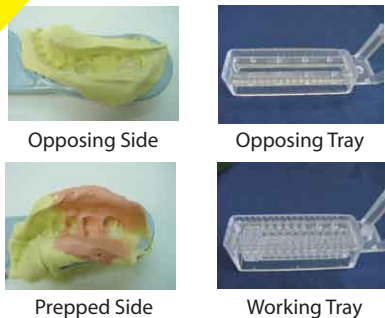
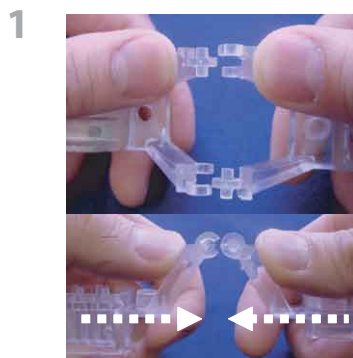


Artimax™ Quad Manual



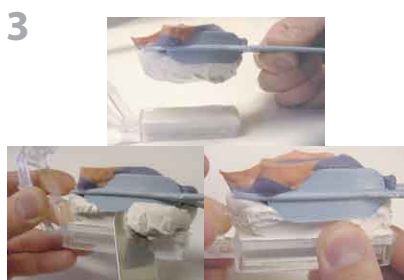
Artimax articulator is composed of an opposing tray and a working tray. The prepped side of the impression always faces the working tray.



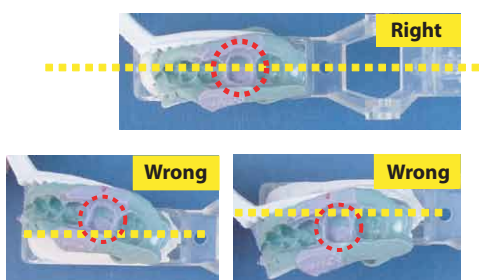
Hold the trays parallel to one another and snap the hinges gently into place with your thumbs, one hinge at a time



Using scissors or knife, trim the impression of both the prepped side and the opposing side, so that the impression fits between the trays.



1) Start with the opposing side first. Pour stone on the opposing side of the impression and on the upper tray. Invert the impression on the upper tray. 2) Before the stone sets, clean away excess stone with a spatula. 3) Wipe off the sides of the tray with finger tips for a clean look. (This will substantially reduce your grinding time later on)



When inverting the impression onto the opposing tray, place it so that the center of the prepped tooth (red dotted line) is aligned with the center of the working tray (shown with yellow dotted line)



To correctly position the metal pin for the working die, mark the center of the prepped tooth on the impression and then on the working tray with a marker. (Other pin alignment methods are also demonstrated both on DVD and detailed manual)



Insert the metal pins. Use one pin for the prepped tooth and one pin for each adjacent tooth.



The best way to put the die stone on the working tray is to cover the pin holes first, without vibration. Then, dab the stone gently in small motion to spread evenly.



Invert the working tray along the pivotal hinge over the impression filled with stone.



Method 1. Trim and section models on the tray and remove each die



Method 2. Remove the whole working model (opposing model too, if wanted) and trim



Trim, section, and remove the dies in whichever order best fits your work style